

Manure of the Future

Mark Jenner, PhD

Manure Visionary

Biomass Rules, LLC
Economics/Regulations/Infrastructure 

Manure Entrepreneurs

May 22, 2008

Manure of the Future...



Biomass Rules, LLC
Economics/Regulations/Infrastructure

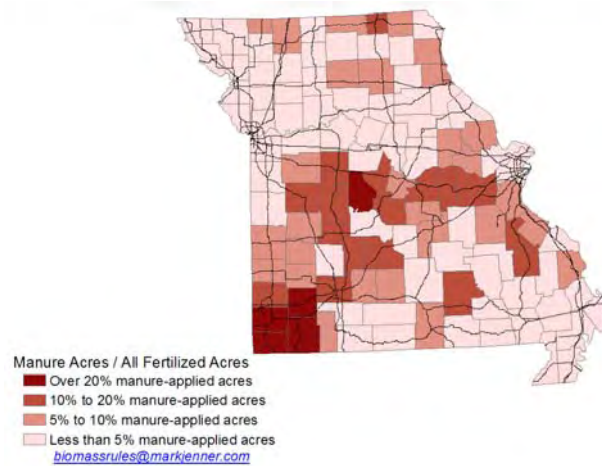
- Will require a greater knowledge of manure quality **as a feedstock** than ever before.
- Will utilize complementary, nested technologies and generate **multiple outputs**.
- Will require a more sophisticated **infrastructure**.

Current Manure Utilization

2002, USDA Census of Ag



Biomass Rules, LLC
Economics/Regulations/Infrastructure



What is the Quality of Your Manure?



Biomass Rules, LLC
Economics/Regulations/Infrastructure

If you want to *sell* your manure, you had better know the *quality* of it!

Manure Must Be Understood



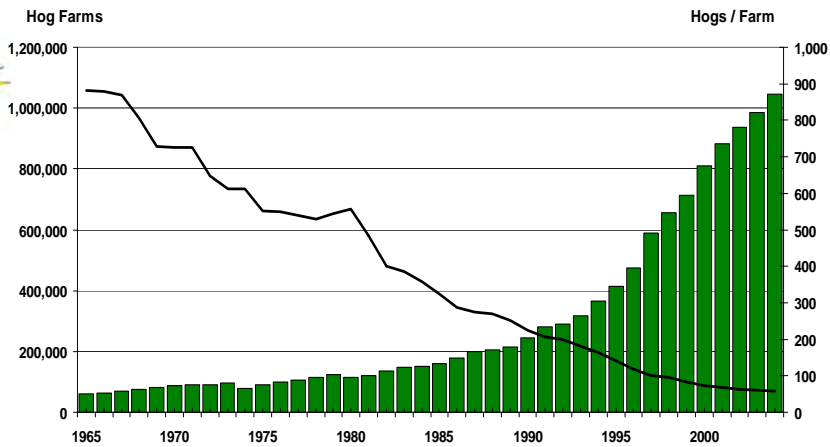
Biomass Rules, LLC
Economics/Regulations/Infrastructure

- **Feces and urine as voided.**
- Feces, urine, other excrement, and bedding produced by livestock that has not been composted.
- **Manure**, bedding, compost and raw materials or other materials commingled with manure or set aside for disposal.
- **Unused corn and soybeans.**

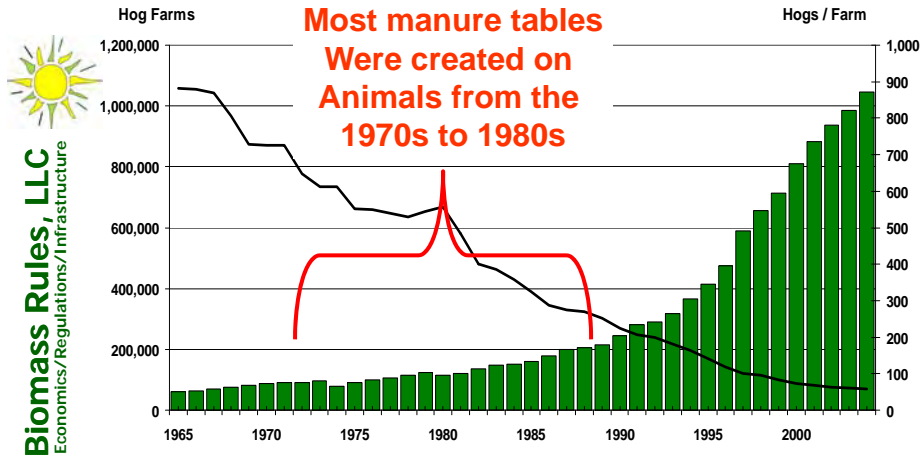
Manure Today is Different Than Manure of 30 Years



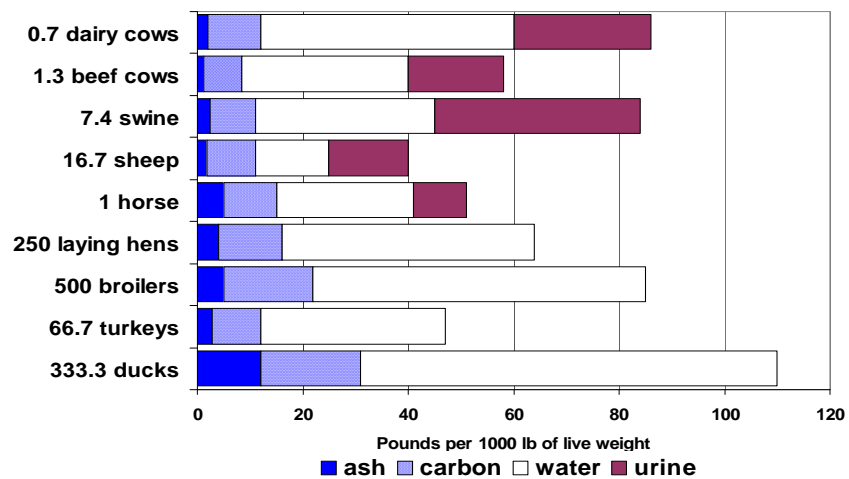
Biomass Rules, LLC
Economics/Regulations/Infrastructure



Manure Today is Different Than Manure of 30 Years



Manure Quality Varies



Water Content Matters

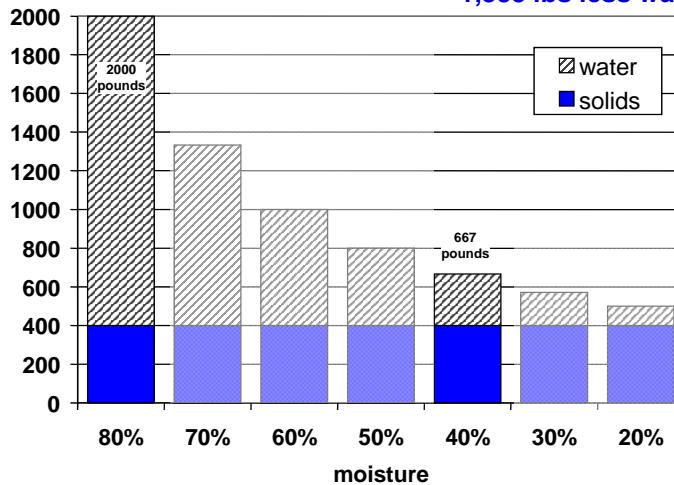
400 lbs solids @ 80% moisture = 2,000 lbs

400 lbs solids @ 40% moisture = 667 lbs

1,333 lbs less water



Biomass Rules, LLC
Economics/Regulations/Infrastructure



Is Manure an Environmental Benefit or Liability?



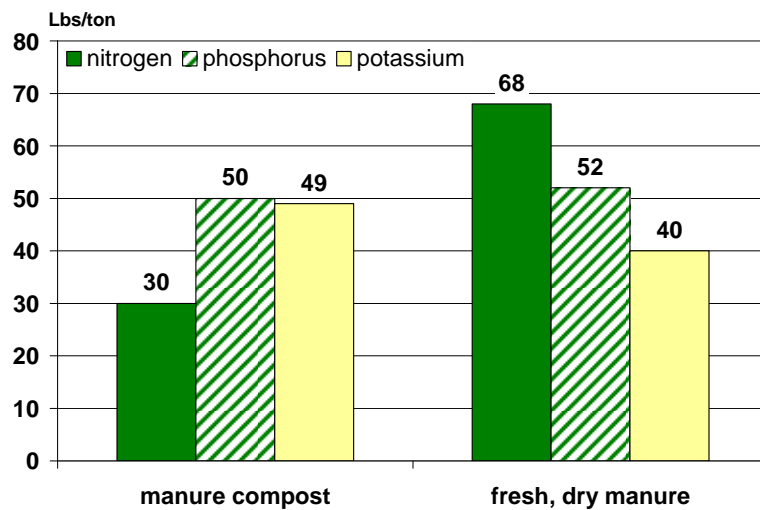
Biomass Rules, LLC
Economics/Regulations/Infrastructure

- CERCLA air quality emissions limit is 100 lbs., NH₃ per day. 365-days of that emission is 18 tons/year of NH₃.
- A CAFO Rule success has been that it is easier to managing P in the feed.
- Carbon Credits have changed the way we look at CH₄. Is CH₄ an environmental evil or economic benefit?

Efficiency Is Increasing

- **Increased rate of gain** from better genetics and better feed formulations
- **Manure quality can be lower.** Smithfield methanol project did not work because real manure was less 'potent' than the tabled manure estimates.
- **Manure can have higher values.**
- **Before** capital investments are made, **establish the quality of the manure.**

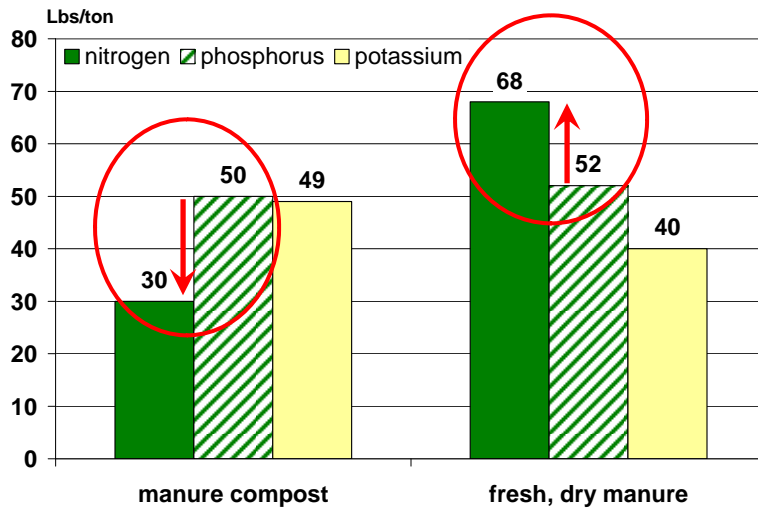
High Quality Manure



High Quality Manure



Biomass Rules, LLC
Economics/Regulations/Infrastructure



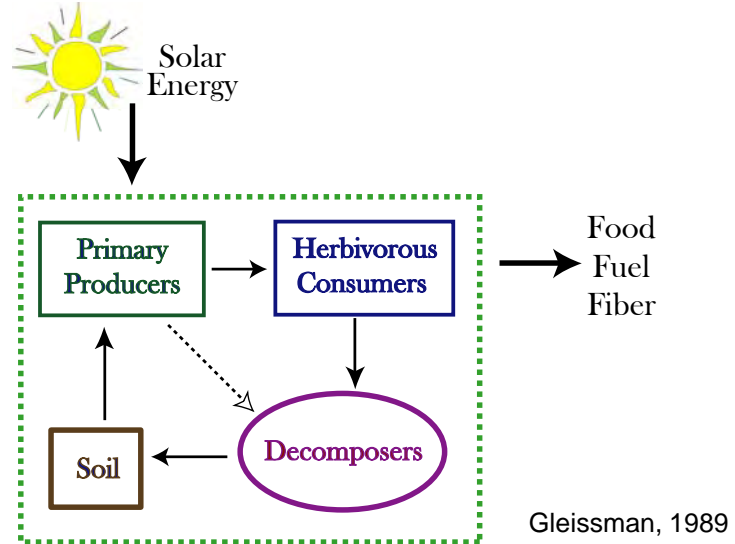
Capitalize on System Benefits



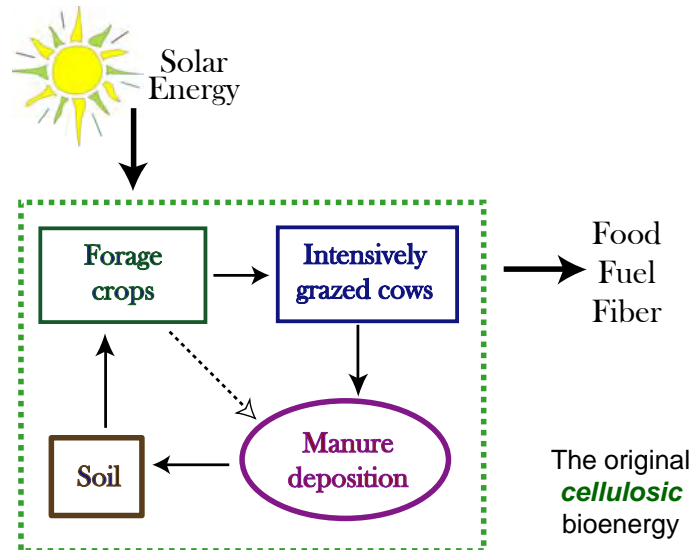
Biomass Rules, LLC
Economics/Regulations/Infrastructure

- Energy flows through the system. Capture that waste heat for other uses before it leaves.
- Recycle nutrients and water.
- Bring in outside materials to optimize the technology.
- Generate as many marketable products as possible.

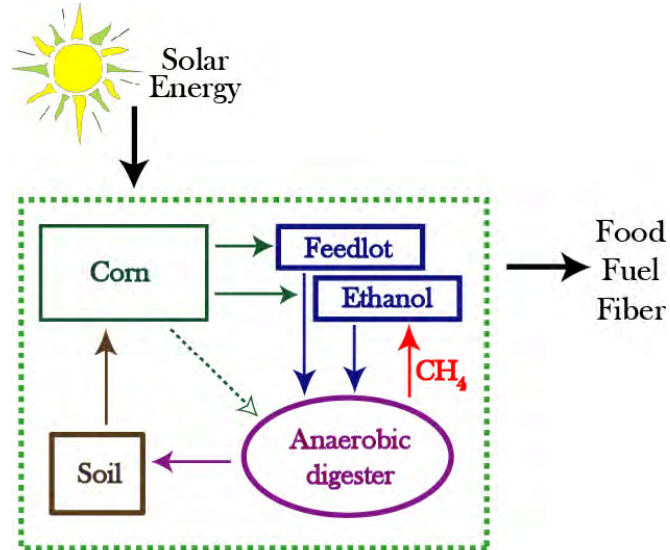
The Production Ecosystem



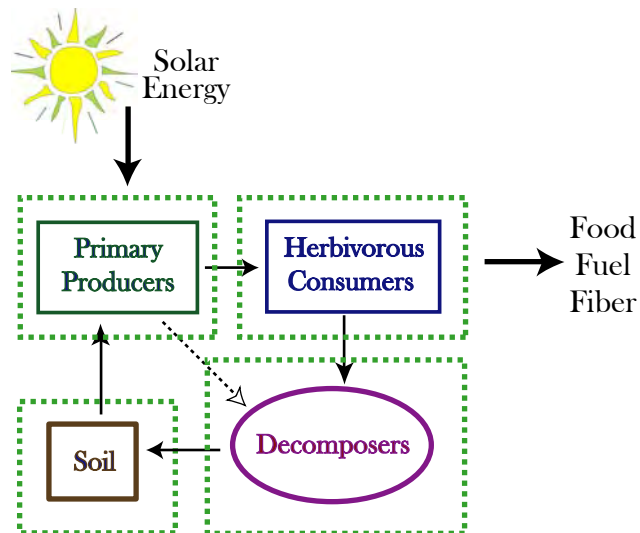
Intensive Grazing System



E3 Biofuels (currently closed)



The Ecosystem w/ Markets



Consider Other Feedstocks



Biomass Rules, LLC
Economics/Regulations/Infrastructure

- Are there other materials that will aid in composting? Anaerobic digestion?
- Dairy wash water, mortalities, yard waste food processing wastes, restaurant left-overs, used oils, grease trap waste?
- What kind of regulatory/legal complications arise from mixing materials?
- Is there 'tipping' revenue available?

Do Not Rely On Single Market



Biomass Rules, LLC
Economics/Regulations/Infrastructure

- 2007, USDA NRCS report: digester costs from 7 to 29 cents/kWh installed.
- Revenue from power sales was reported between to be from 2 to 6 cents/kWh.
- Other revenue sources can be from cost offsets, sale of green power, digester solids, and carbon credits.

The Sum of Benefits >> Sum of Costs.

Target All Available Markets



Biomass Rules, LLC
Economics/Regulations/Infrastructure

- Fertilizer (N, P, K)
- Organic soil amendment (C)
- Compost
- Green power
- Carbon credits
- Building materials
- Other fiber markets
- Heat offsets
- Power offsets
- Local industrial demand
- Remediation Mkts
- Fish food
- Algae production
- Activated charcoal?

Infrastructure Development Adds Benefits/Costs



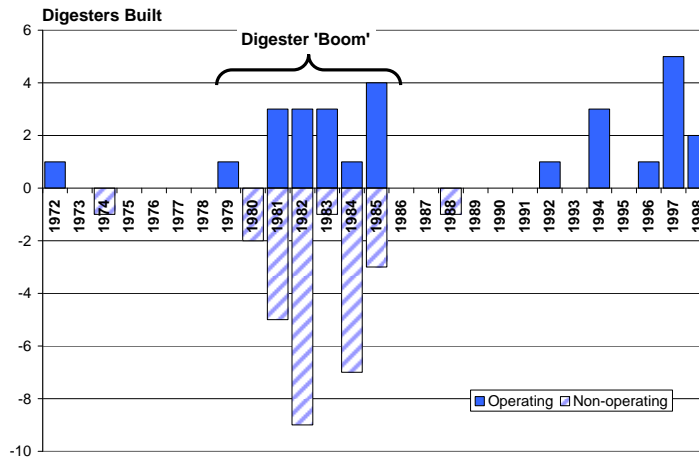
Biomass Rules, LLC
Economics/Regulations/Infrastructure

- Feedstock supply
- Technology maintenance
- Market development and service
- Market regulatory support
- Environmental regulatory compliance
- Infrastructure development takes time

The Early US Digester Industry



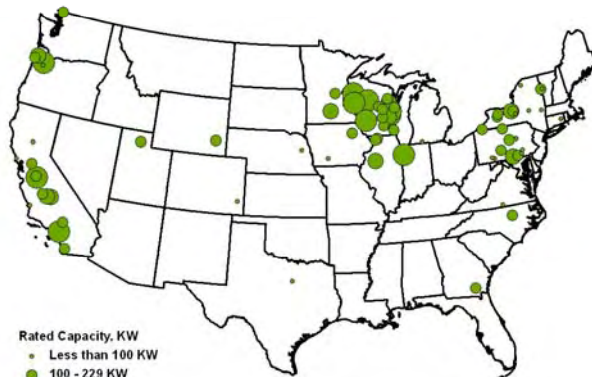
Biomass Rules, LLC
Economics/Regulations/Infrastructure



How Much Manure does it Take to Light a Light Bulb?



Biomass Rules, LLC
Economics/Regulations/Infrastructure



80+ US manure digesters have a 19 MW generating capacity

Serious Manure Power



Biomass Rules, LLC
Economics/Regulations/Infrastructure

- Benson, MN – **55 MW** from turkey manure
- Stephenville, TX – Microgy producing natural gas from manure of 10,000 cows and **8 million gallons** of digester capacity
- E3 Biofuels, Mead, NE – powering a 25 million gallon ethanol plant on **manure from 28,000 cattle**
- Panda Energy fueling a 115 million gallon ethanol plant on **1 billion pounds** of manure
- Hull, IA – Bison Renewable Energy, natural gas from **11 million gallon** methane digester.

Infrastructure Development



Biomass Rules, LLC
Economics/Regulations/Infrastructure

- What energy form is most appropriate?
 - ***Electricity (challenges with transmission and interconnectivity)***
 - ***Sale of biogas direct to manufacturer***
- Regulatory costs must be smaller than the benefits of the energy.
 - ***Feedstock must be an appropriate choice (no serious risks)***
 - ***Cross-jurisdictional agencies must complement energy production and environmental goals.***

Address Specific Market

compost value market expects performance



Biomass Rules, LLC
Economics/Regulations/Infrastructure

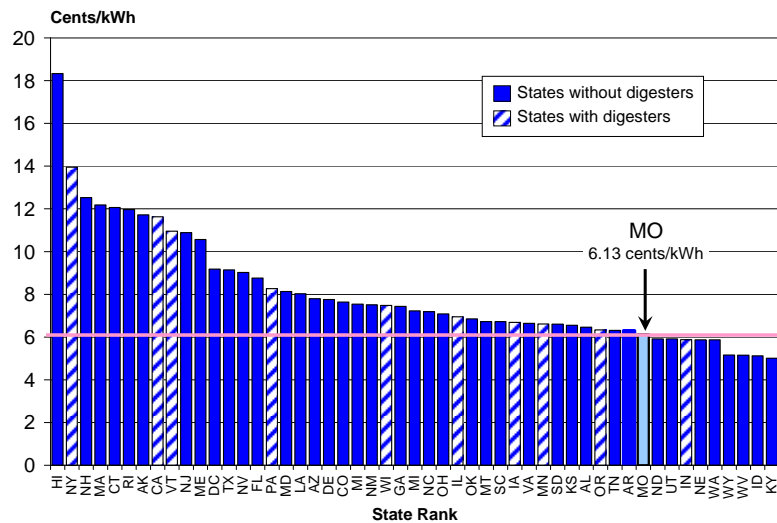
	Industry Quality	State Lab Quality
pH	✓	✓
Soluble Salts	✓	✓
N-P-K	✓	✓
Organic Matter	✓	✓
Moisture %	✓	✓
Particle Size	✓	
Maturity	✓	
Stability	✓	
Inerts	✓	
Trace Metals	✓	✓
Weed Seed/Pathogens	✓	
Cost of Test	\$300	\$40

Are High Prices Good?

State Electricity Prices, 2005



Biomass Rules, LLC
Economics/Regulations/Infrastructure



Take Home Messages



Biomass Rules, LLC
Economics/Regulations/Infrastructure

- Know the **quality** of your manure.
- Look at how it can be nested with other technologies to produce **multiple outputs**
- Work together to advance a new information, distribution, and market **infrastructure**.

Biomass Rules, LLC Economics/Regulations/Infrastructure



Mark Jenner, Ph.D.

- + renewable market development
- + biomass inventory/utilization
- + streamlining regulations
- + land use / demographics

1000 E. Harris Ave.
Greenville, IL 62246
phone: 618-664-9687
cell: 618-223-9331

www.biomassrules.com

email: mjenner@biomassrules.com

Also check out ***Burning Bio News***
at www.biomassrules.com